

CT contrast media injector CT motion™ SPICY

With ulrich CT motion SPICY there is no compromise for ultimate image quality in combination with economic performance



Daniel Crawford, CT Modality Manager,
Benson Radiology

Benson Radiology is a leading provider of diagnostic and interventional radiology in Adelaide and across the southeast of South Australia. Operating across 32 sites in Adelaide and beyond, Benson Radiology meets the radiology needs of patients and medical professionals for key services including CT, MRI, PET, x-ray, obstetric imaging, ultrasound and interventional procedures.

To enable significant workflow improvements for radiographers, Benson Radiology is using the latest model of the ulrichINJECT CT motion from ulrich medical: The new CT motion SPICY.

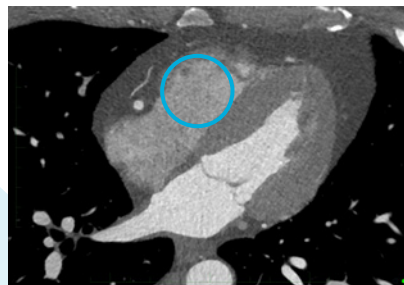
“The new CT motion SPICY, with its feature ‘CDadapt’ for contrast density reduction, is supporting CT Coronary Angiography in conjunction with a Siemens Pro.Pulse CT scanner perfectly,” affirmed Daniel Crawford, CT Modality Manager of Benson Radiology. The enhanced injection methods are primarily beneficial for maintaining opacification of the right heart structures without complete wash-out of contrast or increased density of the right ventricle.

Besides the diagnostic performance, the economic performance is also convincing: “The set-up procedure just once daily, the rapid patient

changeover and the injection from the original media containers are ideal for our high patient throughput. The improved workflow makes the radiographers day easier to manage with improved satisfaction and the time saved has enhanced our ability to service more patients in a busy clinic setting,” confirmed Daniel Crawford.

“As Benson Radiology injects 30 patients per day per CT scanner at

some locations, the efficient performance of CT motion SPICY has a direct impact on our patient throughput. The realized time-saving allows us to scan ten (10) additional patients per week. The increased patient throughput of 7% led to increased turnover – this was the convincing factor for our management to give the financial justification to procure the new CT motion SPICY in our sites.”



Appropriate opacification of the right side of the heart.



Excellent contrast enhancement of the coronary vessels.

Case: Patient: 41yr old male, presentation: atypical chest pain, heart rate: 66-76 BPM